

## 95 Express Monthly Operations Report – December 2013

### General

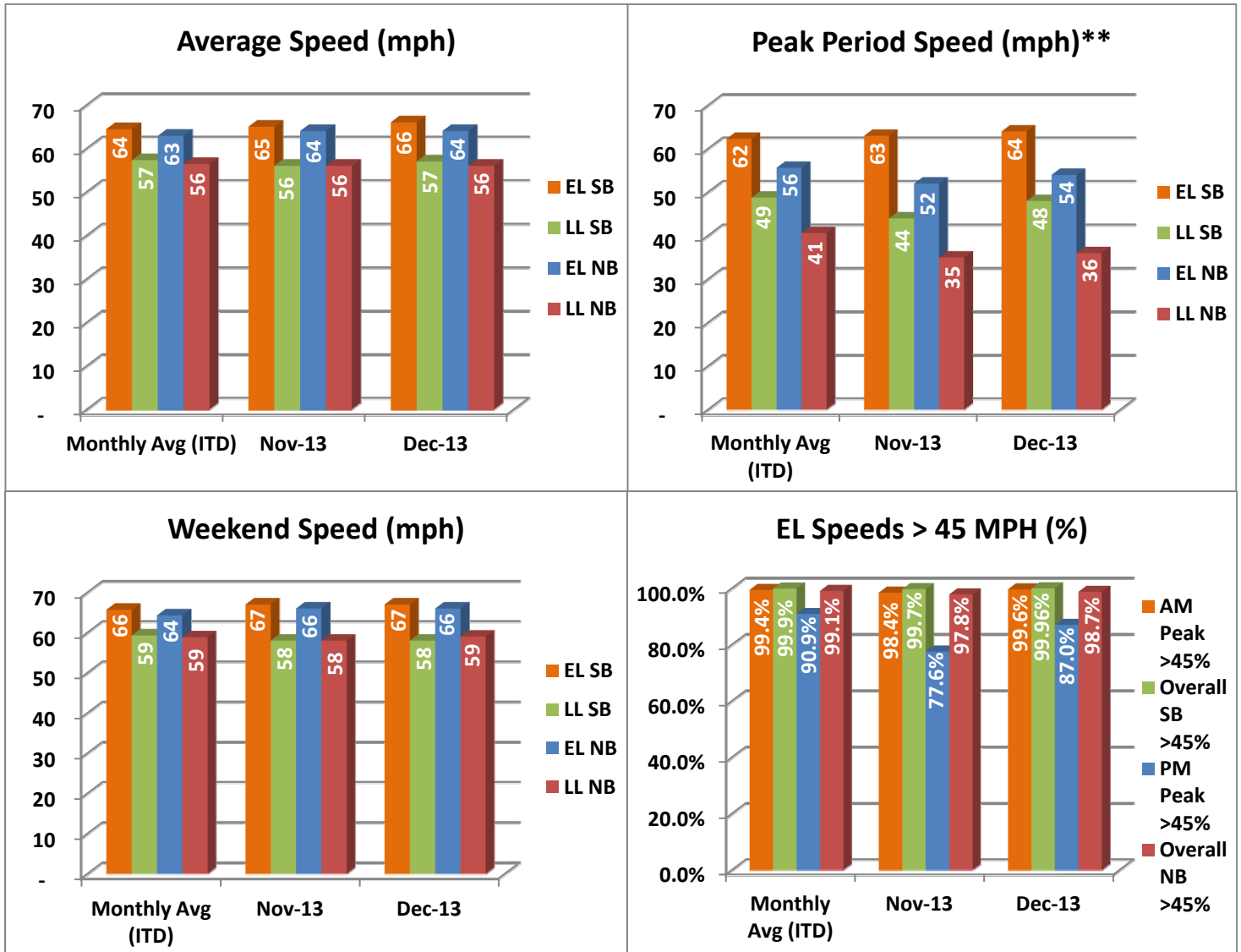
In total, the 95 Express Lanes:

- ✓ Serviced 1,929,971 vehicle trips in December 2013 (22.2 million trips for year 2013 to date), bringing the total since opening (December 5, 2008) to approximately 88.3 million trips.
- ✓ Had estimated monthly toll revenue of \$1.63 million in December 2013 (\$19.6 million for year 2013 to date), bringing the total revenue to date to approximately \$71.2 million.
- ✓ Increased to a total of 9,044 registered vehicles, resulting in 38,378 toll exempt trips.

<u>December 2013 Statistics</u>	<u>Southbound</u>		<u>Northbound</u>			
<b>Total Trips</b>	1,020,944		909,027			
<b>Exempt Trips</b>	20,586		17,792			
<b>Revenue</b>						
	\$873,644		\$752,298			
<b>Tolls</b>						
- Range	\$0.00 - \$6.75		\$0.00 - \$7.00			
- Avg. Weekday	\$1.20		\$1.19			
- Avg. Peak Period**	\$1.64		\$2.79			
- Avg. Weekend	\$0.35		\$0.24			
- Avg. Off Peak	\$0.90		\$0.63			
- 85 <sup>th</sup> Percentile Weekday	\$2.75		\$2.75			
<b>Volume (veh)</b>						
	<b>EL</b>	<b>LL</b>	<b>EL</b>	<b>LL</b>		
- Avg. Weekday	35,821	105,977	32,157	100,103		
- Avg. Peak Period**	8,877	17,397	8,418	17,194		
<b>Speed (mph)</b>						
	<b>EL</b>	<b>LL</b>	<b>Δ</b>	<b>EL</b>	<b>LL</b>	<b>Δ</b>
- Avg. Overall	66	57	9	64	56	8
- Avg. Peak Period**	64	48	16	54	36	18
<b>Operated Above 45 MPH</b>						
	99.96%		98.7%			
<b>Remained Open to Motorists</b>						
	95.3%		87.7%			
<b>Closed due to Planned Construction</b>						
	2.5%		7.7%			
<b>Closed due to Non-recurring Events</b>						
	2.2%		4.6%			
EL (Express Lanes); LL (Local Lanes)						
**Peak Period is defined as 6-9 AM (southbound) and 4-7 PM (northbound).						

## Operations/Traffic Statistics - Speed Data

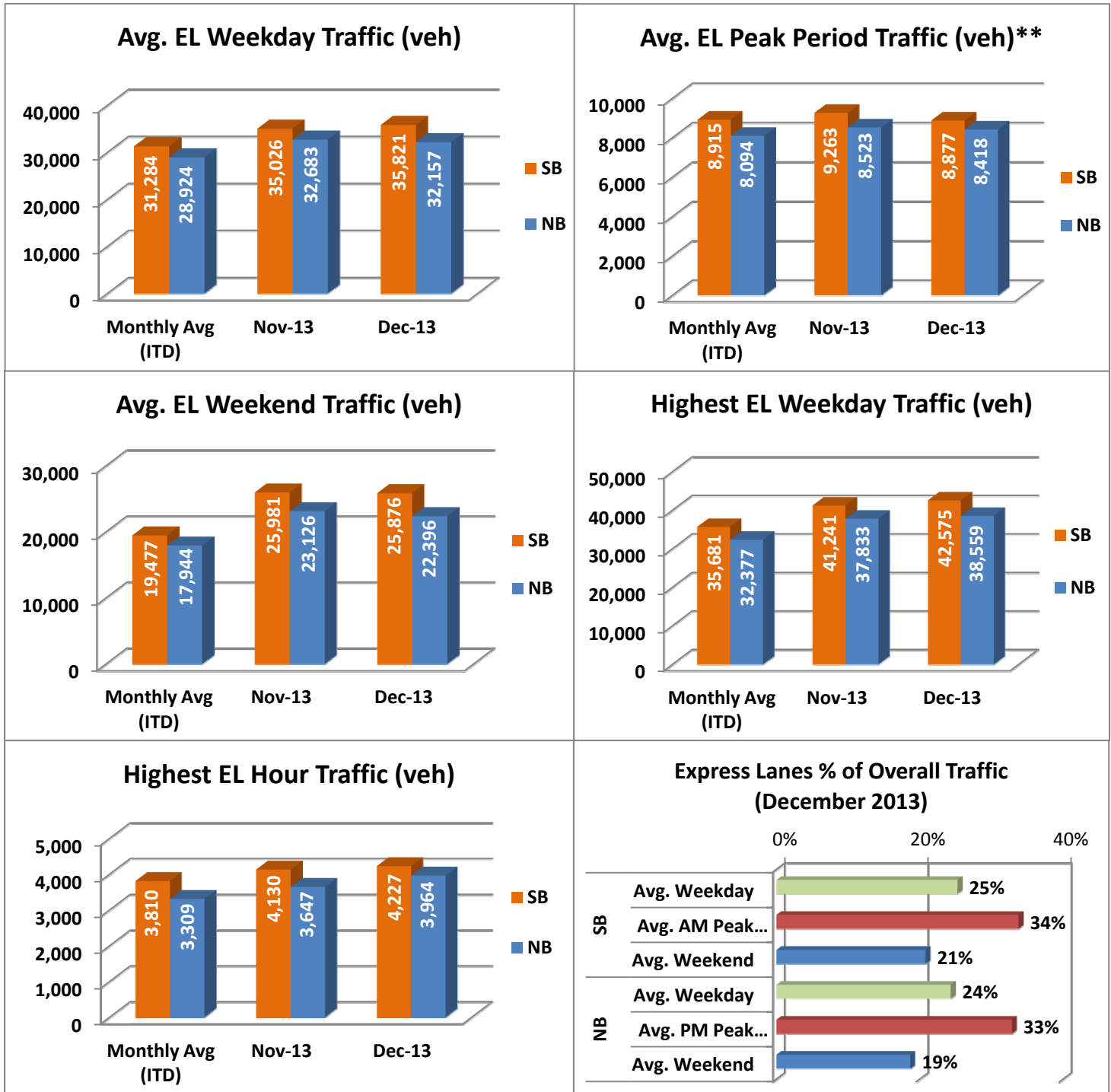
\*\* Peak Period is defined as 6-9 AM (southbound) and 4-7 PM (northbound).



NOTE: ITD = Inception to Date

## Operations/Traffic Statistics - Volume Data

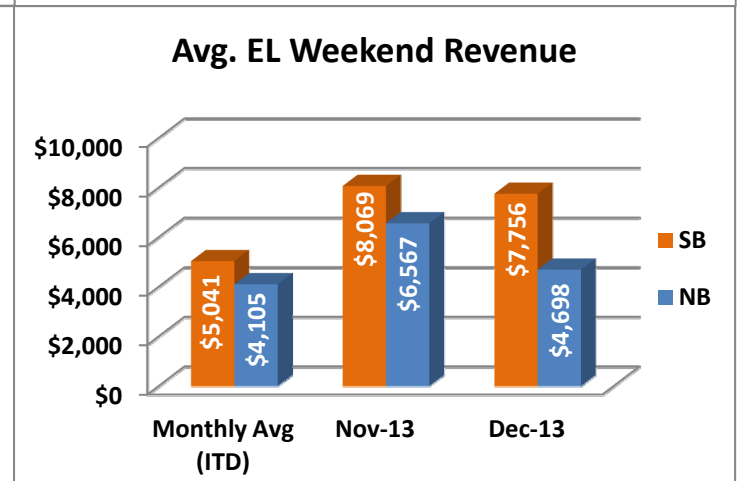
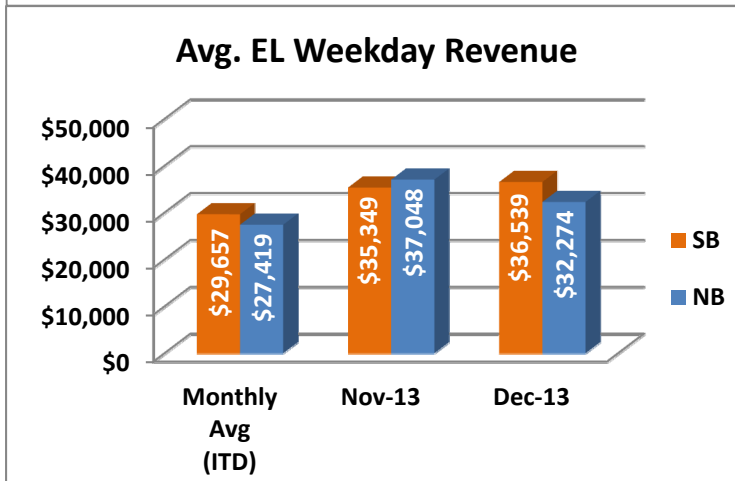
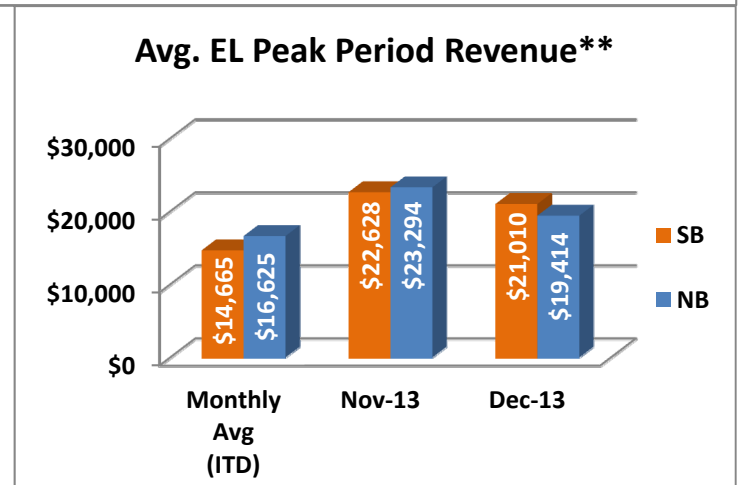
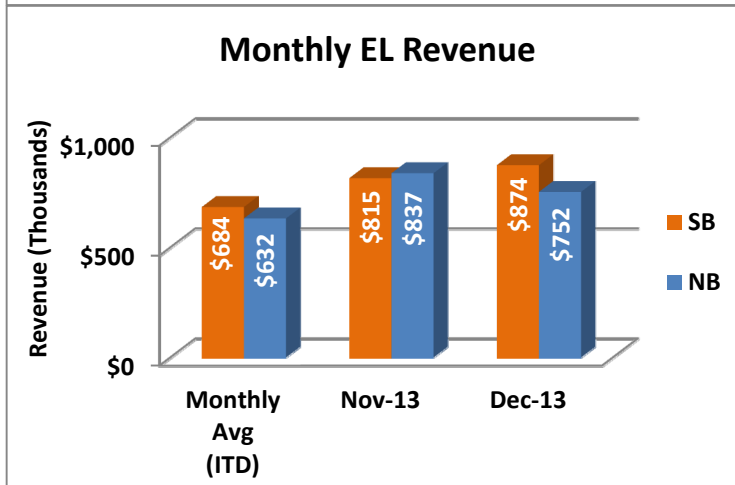
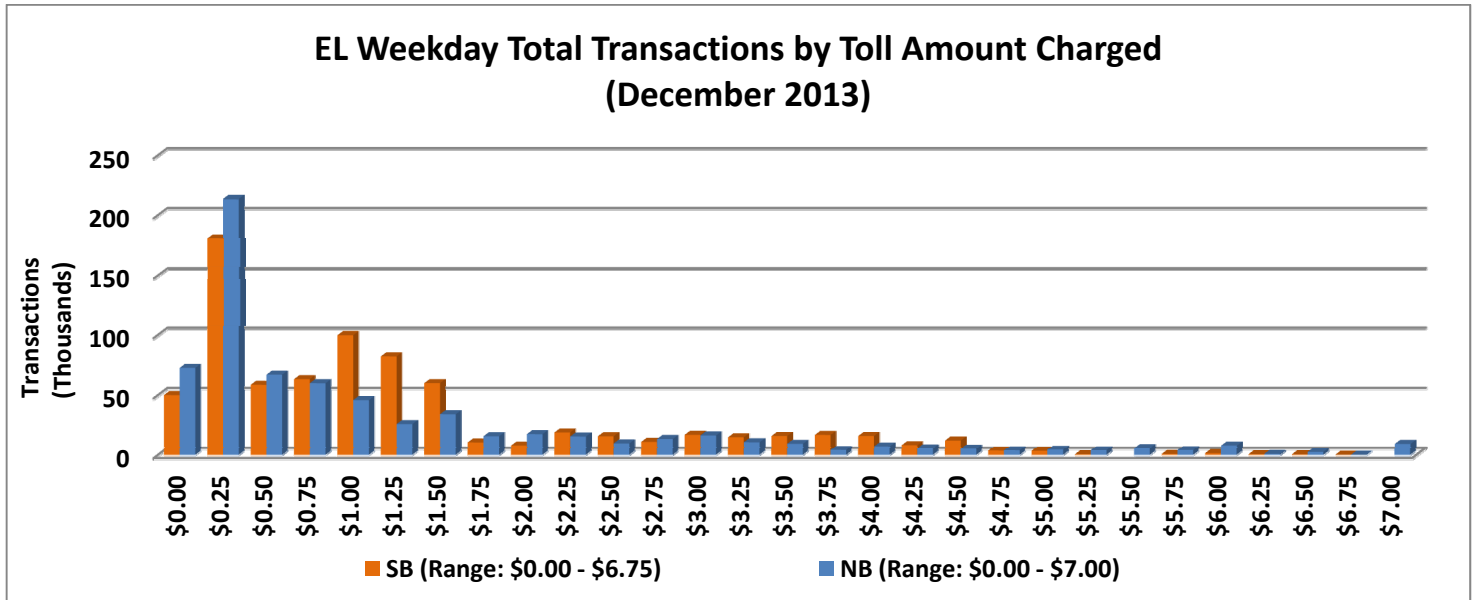
\*\* Peak Period is defined as 6-9 AM (southbound) and 4-7 PM (northbound).



NOTE: ITD = Inception to Date

## Revenue/Tolls Statistics

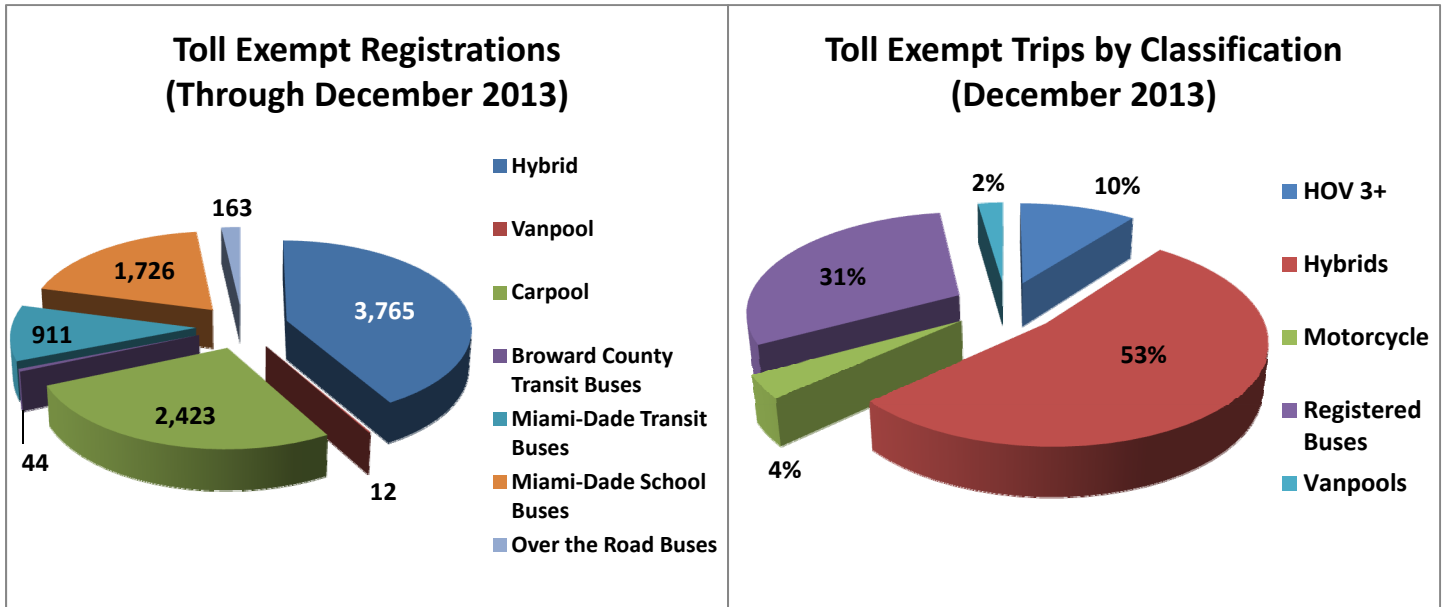
\*\* Peak Period is defined as 6-9 AM (southbound) and 4-7 PM (northbound).



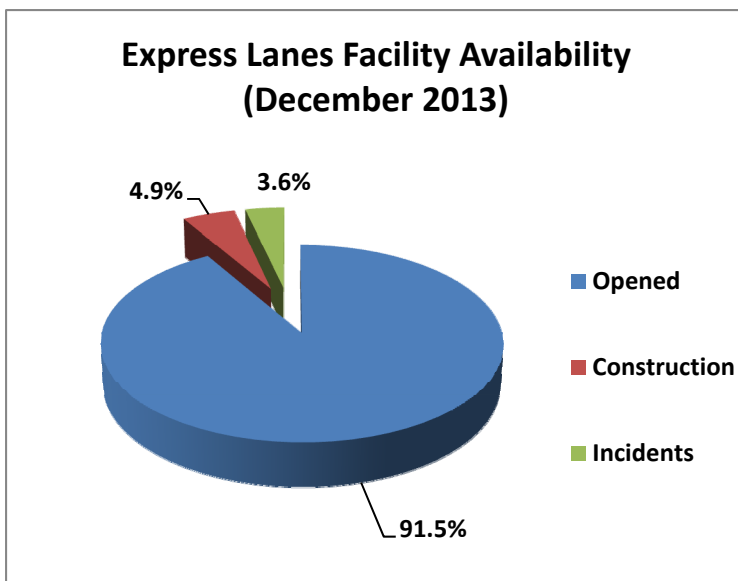
NOTE: ITD = Inception to Date

## Registrations—Toll Exempt Trips

The total registrations through December 2013 increased to 9,044. The 38,378 Toll Exempt Trips for this month are shown by classification below.



## Facility Availability



The entire 95 Express lanes (both directions) were open to motorists 91.5% of the time, while closed 4.9% due to 17 planned construction/ maintenance events (each lasting approximately 4 hours, 27 minutes in duration, on average) and 3.6% due to 146 non-recurring events (each lasting approximately 21 minutes in duration, on average).